

2008

NORWAY

Concrete batching and distribution plant for the production of precast concrete pipes.

**Main technical features:**

- Max concrete production : 80 cbm/h  
(for a batch each 3 min)  
- Countercurrent mixers: 2x3000/2000 lt

- Aggregate silos : 8x65 cbm

- Cement silos : 3x70 cbm

- Additives: 4x1600 lt

- Bucket conveyors : 2 x 2 cbm

- Max speed : 160 mt/min

- Rails length : 190 mt

- Concrete discharge Stations : 10

- Automatic washing system : 110 bar

- Concrete recycling : 12 cbm/h

- Water clarification System : 500 lt/h

- Microwave moisture metering of concrete : 2 pcs

- Microwave moisture Metering for sand : 4 pcs

- Insulation panels :

- Wall panels 120 mm : K=0,200

- Roof panels 120+35 mm : K=0,169

**Production control system:**

- 1 Software program for aggregate loading : T2008-I

- 1 Software program for dosing and mixing : S2008-M

- 1 Electrical switchboard for the manual and automatic control mode of aggregate filling and storage. All functions carried by PLC and Touch-screen.

- 1 Electrical switchboard for the manual and automatic control mode of dosing and mixing system. All functions carried by PLC and PC

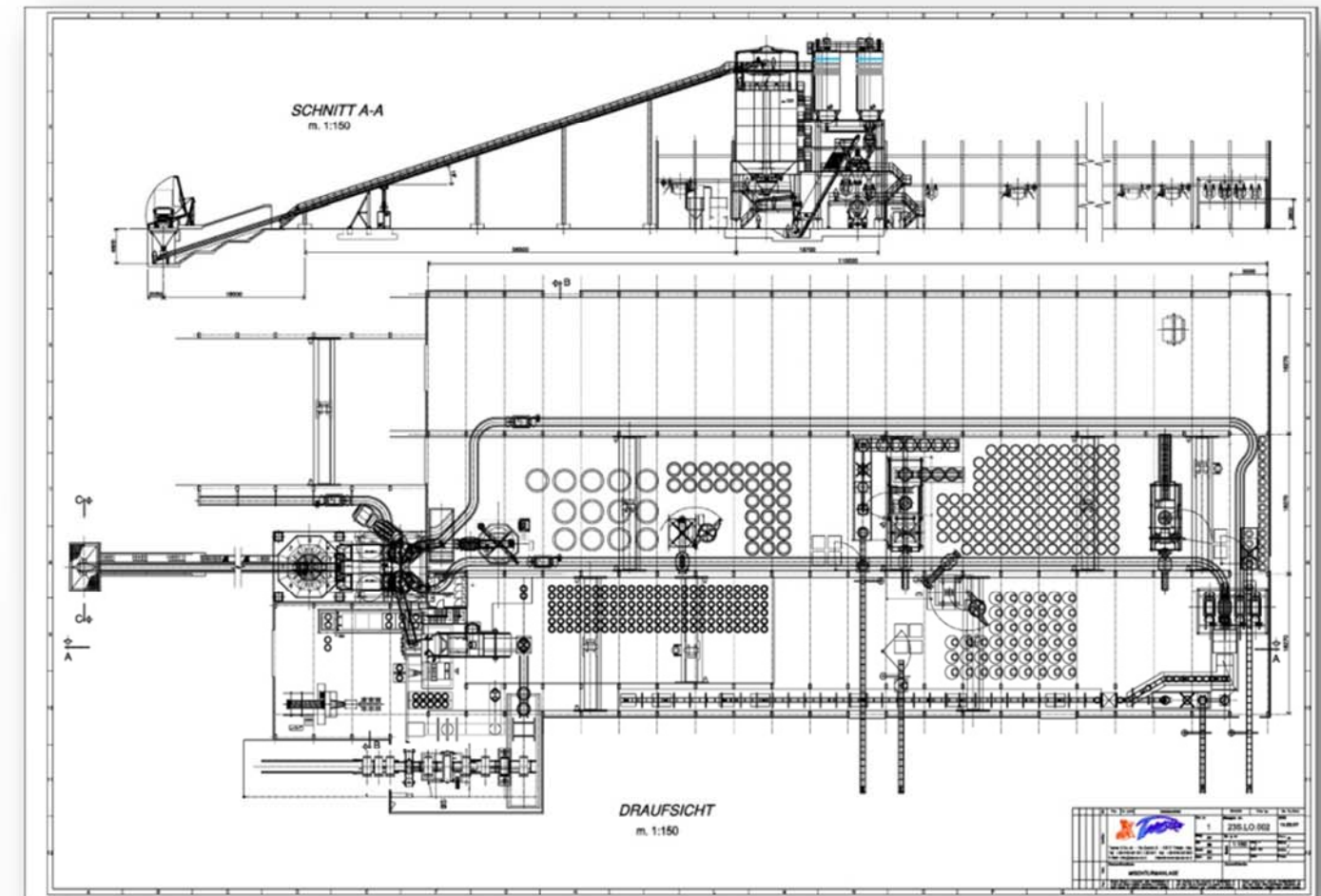
- 1 External control box for selection of Aggregate destination.

- 2 External control box for the control of mixers.

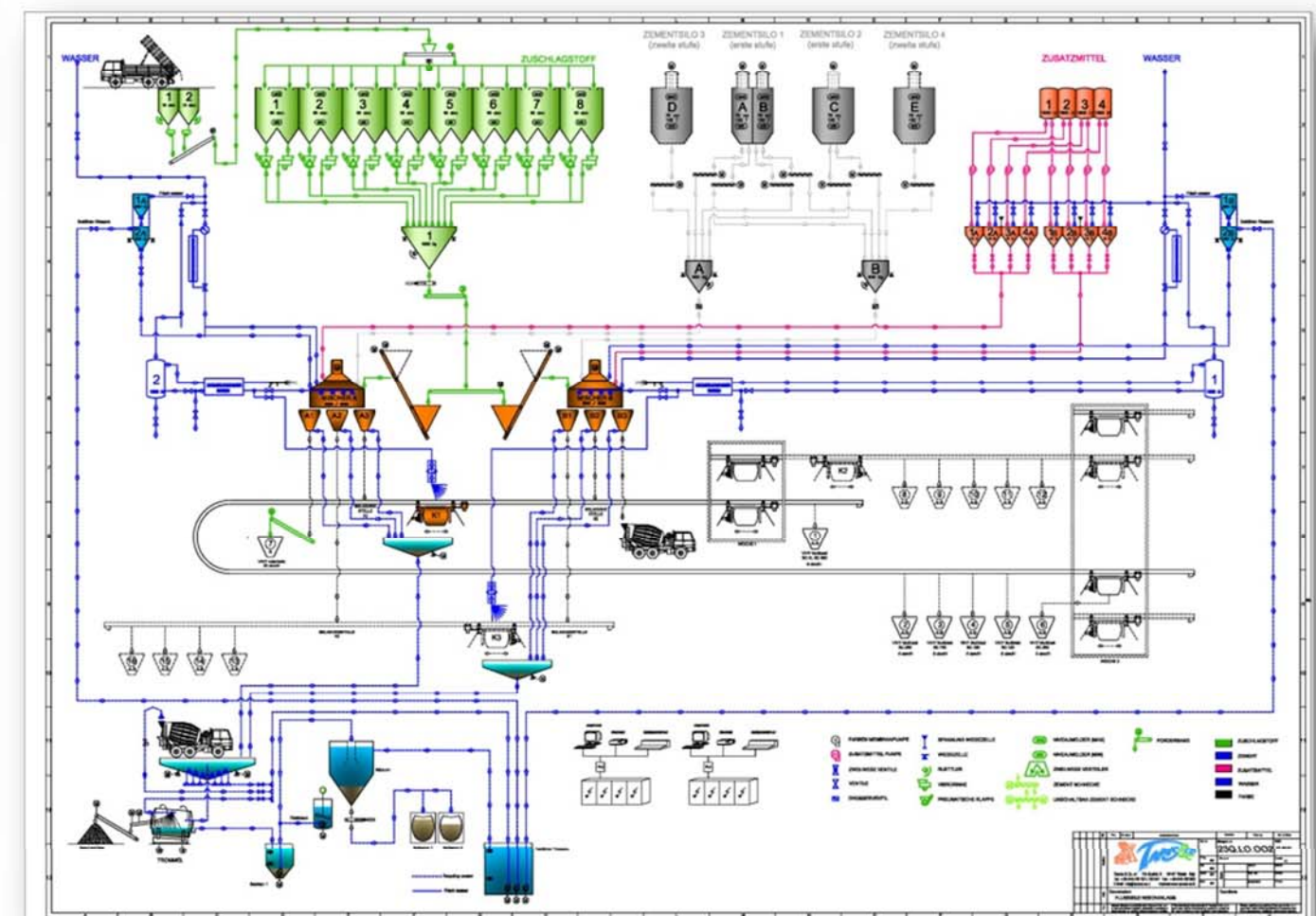
- 10 External control box for the selection of the wished recipes.



**Dacem**  
ENGINEERING & ASSISTANCE



Lay-out drawing of new batching and distribution plant



Flow-sheet drawing of the batching and concrete distribution plant